

### Summary & Highlights

- Similar to the previous week, week 3 local influenza activity indicators showed a mixture of decreases, no changes, and increases. Overall, ILI Outpatient Sentinel Sites, ED visits, and labs are at or below seasonal historical baseline levels.
- Local Geographic Activity Designation (Click [here](#) for definitions) = SPORADIC
  - Hospital labs reported 375 tests run with 3 positive result (0.8%) for week 3, this percentage positive is higher than the previous week and is lower than the historical baseline average.
  - Pediatric urgent care (PUC) visits for influenza-like-illness (ILI) and respiratory symptoms were up slightly, while hospital emergency department (ED) ILI and respiratory related visits did not change compared to the previous week. Figures for ED visits are similar to the historical baseline average for this time of year.
  - Sales of over-the-counter medications were generally lower or unchanged; with decreases in electrolyte, adult anti-fever, and chest rub sales; slight decreases in thermometer sales; virtually no change in cough & cold; and increases in pediatric anti-fever sales. A decrease in antiviral prescriptions was also reported in week 2 (most recent week available).
  - Nationally, during week 2, influenza B and A (H3N2) viruses co-circulated at low levels with 2009 influenza A (H1N1) viruses (98% all sub-typed influenza A viruses reported to CDC this week were 2009 influenza A (H1N1) viruses).

### Local Flu Activity Dashboard *(All data are preliminary and may change as more reports are received.)*

Indicators	Week Number Available	Current Week Value	% Change Chart from Last Week <sup>‡</sup> (-   +)	# Weeks <sup>‡</sup> ▲ ● ▼	General Trend Chart (If available, ---- line is historical avg.)
Medical Facility Lab Data	3	0.8% Pos.	>100%	1 ▲	
ILI Outpatient Data (Sentinel Medical Sites)	3	0.36% of All Visits	41.8%	1 ▲	
Hospital ED Data†:					
Coded as ILI	2	3.0% of All ED Visits	-14.1%	3 ▼	
Complaint Defined as ILI	3	18.5% of All ED Visits	-0.4%	1 ●	
Categorized as Respiratory	3	14.7% of All ED Visits	0.3%	1 ●	
Pediatric Urgent Care Data†:					
Complaint Defined as ILI	3	52.8% of All PUC Visits	7.7%	2 ▲	
Categorized as Respiratory	3	47.3% of All PUC Visits	10.8%	1 ▲	
School Absences	3	7.37% Absent	-11.9%	2 ▼	
Death Certificate Pneumonia & Influenza Deaths†	3	11.2% of All Deaths	-4.0%	1 ▼	
Medication Data:					
OTC Cough & Cold Sales	3	5,919 Total Sales	-1.4%	1 ●	
Thermometer	3	149 Total Sales	-11.3%	1 ▼	
Antiviral Prescriptions	2	0.70% of All Anti-Infectives	-8.0%	12 ▼	
Confirmed Influenza Associated Hospitalizations	3 (as of 1/26 12:00 PM)	0 Reported	0.0%	1 ●	

Reportable Conditions**	Cumulative Numbers as of Jan. 26, 2010*, 12:00 PM	
	2009	2010 YTD
Influenza Clusters/Outbreaks Reported	1 suspected	0
Influenza Associated Hospitalizations (IAH) Reported (see also Fig. 8)	519	2
IAH Confirmed 2009 Influenza A (H1N1)§	267	1
Pediatric Influenza Associated Death Reported	2	0

\*Numbers subject to fluctuations as lab results are received and suspects are determined confirmed or not a case.  
 \*\*Confirmed cases only unless stated otherwise. Based on assigned jurisdiction being Franklin County or City of Columbus and date case was created on the Ohio Disease Reporting System.  
 †Interpret with caution. Indicators with small number subject to large weekly percentage fluctuations.  
 §Information provided for references (Reportable condition is any influenza associated hospitalization, regardless of influenza type).  
 ‡Franklin County, OH residents only (based on zipcode)  
 † Number of weeks "▲" = Increase (>2%), "▼" = Decrease (>2%), "●" = Stable (-2% to +2%)

### CDC 122-Cities Mortality Reporting System: Pneumonia and Influenza (P&I) Mortality

In week 3 of 2009 (Jan. 17<sup>th</sup>, 2009 – Jan. 23<sup>rd</sup>, 2010), 11.2% of all Columbus deaths were reported as due to pneumonia or influenza (Figure 1). Nationally, 8.0% of deaths reported were due to pneumonia or influenza in week 2. This national percentage was below the national epidemic threshold of 7.6%.

### Influenza Morbidity and Influenza-Like Illness (ILI) Reports

Outpatient visits for ILI at sentinel medical practice reporting sites (0.36% of all visits reported) increased slightly in week 2 compared to the previous week. The week 2 percentage of Franklin County resident BioSense ED hospital encounters is 3.0% for ILI coded chief complaints and 2.3% for ILI diagnosis (Figure 2). Specific complaints of influenza and defined influenza like illness symptoms in week 3 have decreased compared to the previous week for ED sites and increased slightly for PUC sites (Figures 2-3). In week 3, the ED percentage of visits for ILI defined symptoms is slightly lower than the weekly average typically seen in past seasons.

Nationally, during week 2 of 2010, 1.8% of patient visits reported through the US Outpatient Influenza-like Illness Surveillance Network (ILINet), were due to influenza-like illness (ILI). This percentage has decreased compared to the previous week and is below the national baseline of 2.3%.

### Laboratory Surveillance

During week 3 of 2010, reporting Franklin County sentinel laboratories tested 375 specimens, with 3 (0.8%) positive (Figure 5). The total number of tests done by local reporting labs from week 35 of 2009 through week 3 of 2010 is 15,394, with 2,207 positives (2,197 type A, 10 type B). Nationally, during week 2, WHO and NREVSS laboratories reported 3,211 specimens tested for influenza viruses, 120 (3.7%) of which were positive (Figure 4). Nationally, during week 2, influenza B and A (H3N2) viruses co-circulated at low levels with 2009 influenza A (H1N1) viruses. Ninety-eight percent of all sub-typed influenza A viruses reported to CDC this week were 2009 influenza A (H1N1) viruses. See <http://www.cdc.gov/flu/weekly/> for a comprehensive national report.

The table below shows 2009-10 (starting August 30<sup>th</sup>, 2009) cumulative PCR and culture influenza lab results from ODH lab (totals as of 1/25/2010).

Location	# Seasonal A (H1)	# Seasonal A (H3)	# Seasonal B	# Pandemic A (H1)	# PCR Influenza Not Detected
Franklin County	0	0	0	140*	272
Ohio	1	1	0	1,188*	1,725

Source: ODH Lab (based on county of provider submitting specimen, not county of patient's residence)

\*Not an official count of Pandemic Influenza A (H1N1) in Franklin County or Ohio. Similar to the CDC and ODH, individual case counts are no longer being tracked. Testing at ODH is limited to those meeting criteria. See <http://www.cdc.gov/flu/weekly/> or <http://www.cdrsinfo.com/H1N1flu.html> for more details.

### ED and Pediatric Urgent Care Respiratory Visits

In the 3<sup>rd</sup> week of 2010, the percentage of all ED visits categorized as *respiratory* (14.7%) was the same as the percentage seen the previous week. The percentage of reporting Pediatric Urgent Care visits categorized as *respiratory* (47.3%) was higher than the previous week (Figure 5).

### Over-the-Counter (OTC) Medication Sales and Antiviral Prescriptions

In week 3 of 2010, OTC medications sales were generally lower or unchanged; with decreases in electrolyte, adult anti-fever, and chest rub sales; slight decreases in thermometer sales; virtually no change in cough & cold; and an increase in pediatric anti-fever sales (Figure 6). In week 2 (latest week available), the percentage of Franklin County pharmacy prescriptions for antivirals, out of all anti-infective prescriptions, decreased for the 12<sup>th</sup> week in a row (Figure 7). During week 2, the national antiviral prescription percentage also decreased.

### Additional Influenza Activity Web Links:

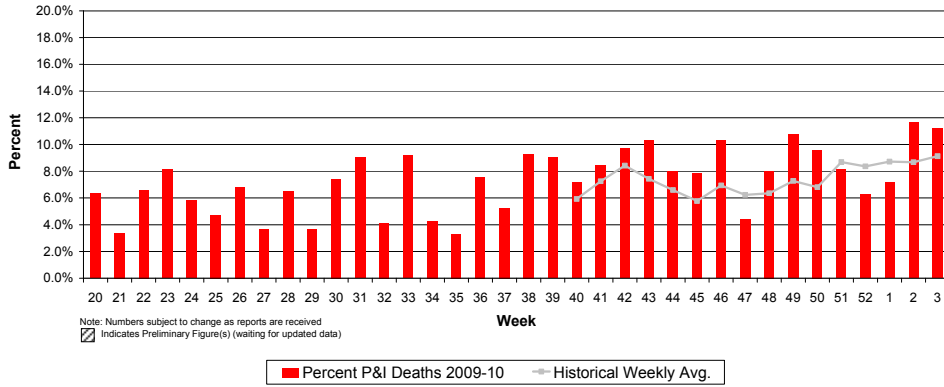
National Pandemic H1N1 Situation Updates: <http://www.cdc.gov/h1n1flu/update.htm>

International Pandemic H1N1 Activity Map: <http://www.cdc.gov/h1n1flu/updates/international/map.htm>

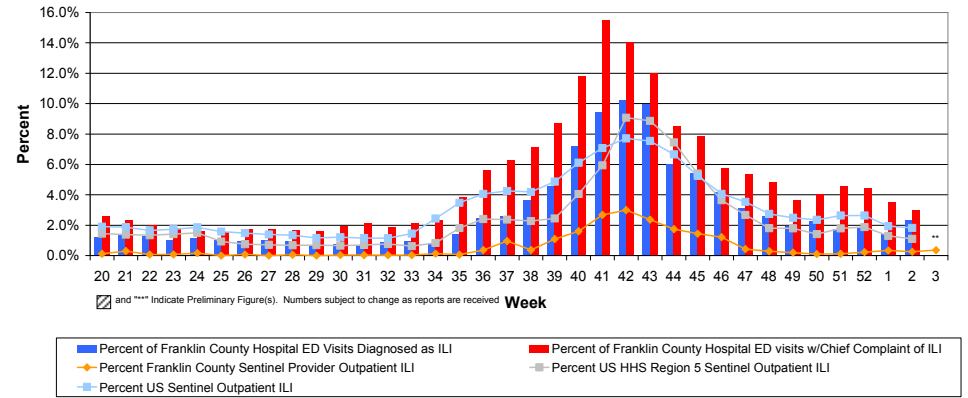
World health Organization Situation Updates: <http://www.who.int/csr/disease/swineflu/updates/en/index.html>

# Columbus & Franklin County Influenza Monitoring Summary – Week 3 (1/17/2010-1/23/2010)

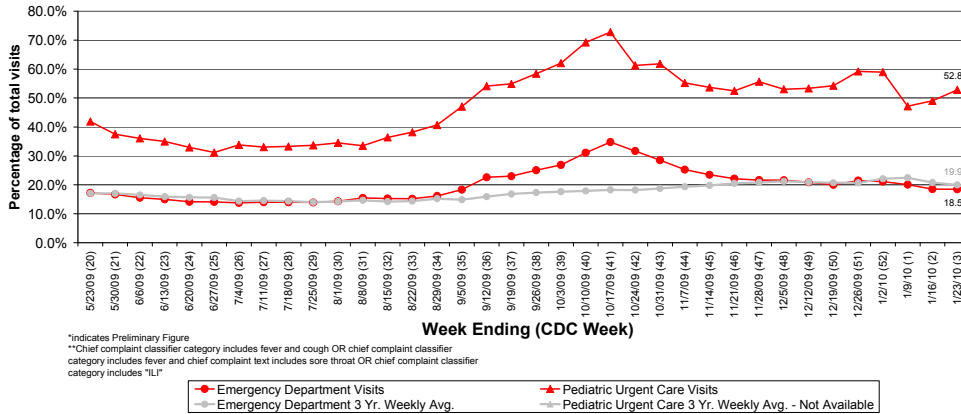
**Figure 1: Percentage of Deaths due to Pneumonia and Influenza  
Columbus, Ohio 2009-10**



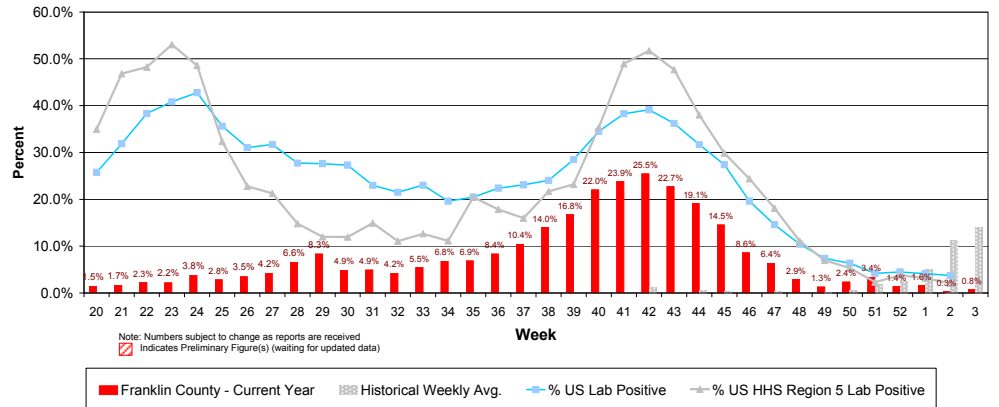
**Figure 2: Percentage of Local, National, and HHS Region 5 ILI Outpatient visits and Percentage of Franklin County Resident BioSense Hospital ILI ED Visits, 2009-10**



**Figure 3: Franklin County Resident ILI Defined\*\* ED and Pediatric Urgent Care Visits, 2009-10,  
Franklin County, OH**

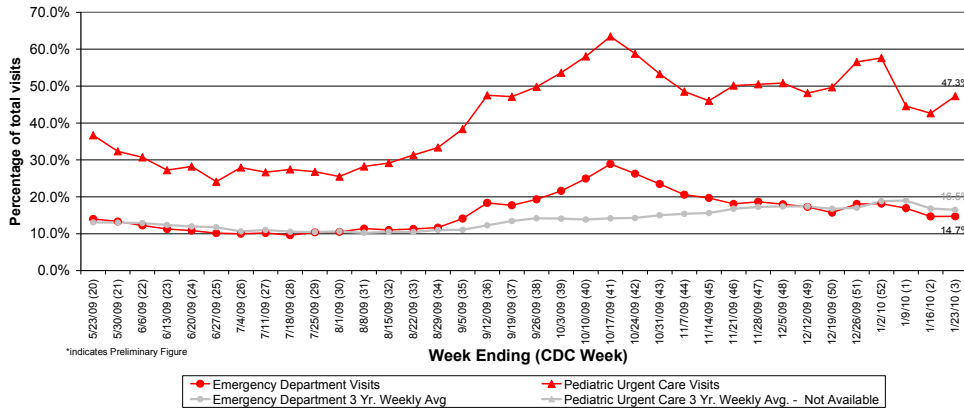


**Figure 4: Percentage of Local Reporting and National Laboratory Positive Influenza Tests by  
Week, 2009-10**

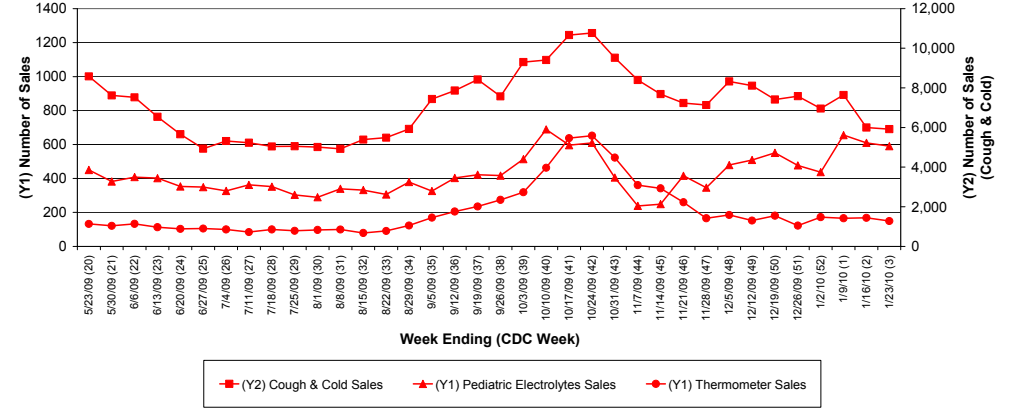


# Columbus & Franklin County Influenza Monitoring Summary – Week 3 (1/17/2010-1/23/2010)

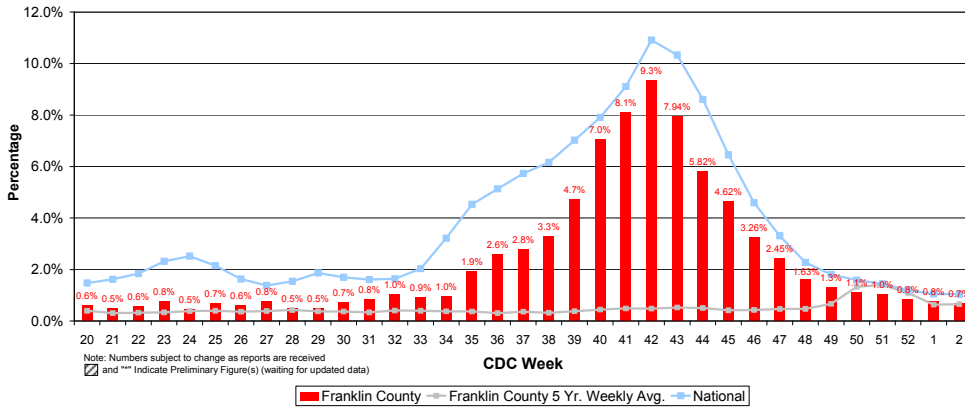
**Figure 5: Franklin County Resident Respiratory ED and Pediatric Urgent Care Visits, 2009-10, Franklin County, OH**



**Figure 6: Selected Number of Over-the-Counter Medication Sales and Weekly Baseline Averages and Medians, 2009-10, Franklin County, OH**



**Figure 7: Percentage of Antiviral Prescriptions out of Total Number of Anti-Infective Prescriptions (Selected Pharmacies)**



**Figure 8: Franklin County Confirmed Influenza Associated Hospitalizations by Hospital Admission Week, Since August, 2009 (As of 12:00 PM, 1/26/2010)**

