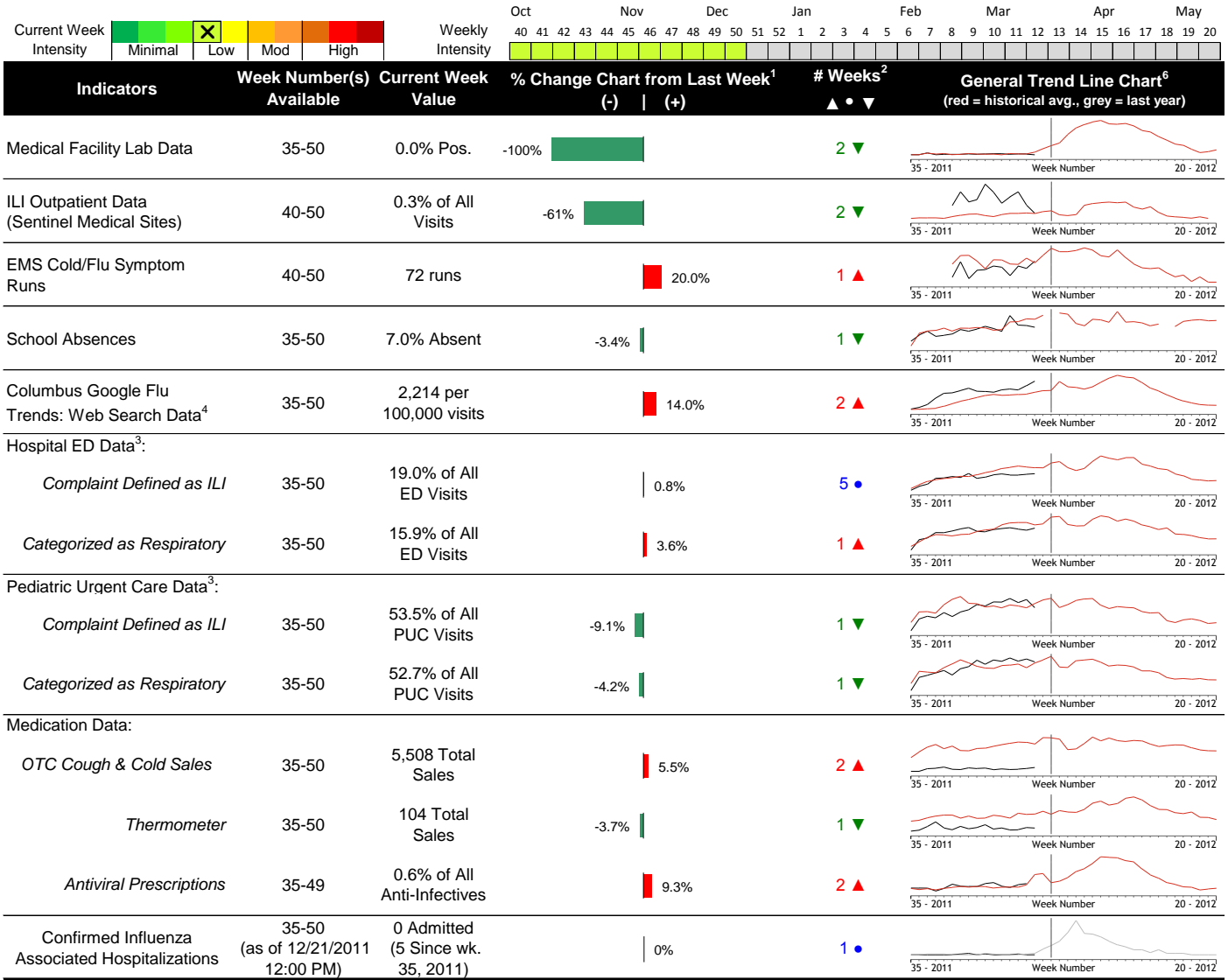


2011-2012 Columbus & Franklin County Seasonal Influenza Activity Weekly Summary (Week 50, Dec. 11th - Dec. 17th, 2011)

Highlights

- Week 50 local influenza activity indicator trends were mixed compared to the previous week. Some indicators are slightly above their respective baseline averages, while some are at or below their baselines averages.
- Geographic Activity and Local Intensity designation (Experimental: Click [here](#) for draft definitions) = LOW, LOW
- Medical facility labs reported 416 tests run with 0 (0.0%) positive results for week 50.
- ED visits for influenza-like-illness (ILI) were stable while respiratory symptom visits increased slightly compared to the previous week. Pediatric Urgent Care visits for ILI and respiratory symptoms both decreased compared to the previous week. ED visits for ILI and respiratory symptoms are at or below their weekly historical baseline averages, while PUC visits are similar to their weekly historical baseline averages.
- Over-the-counter medication sales were mixed (decreases in thermometer, chest rub, pediatric anti-fever, and throat lozenge; increases in cough and cold, electrolyte, and adult anti-fever) compared to the previous week.
- Nationally during week 49, influenza activity was low (CDC updates National data on Friday of each week). Please [visit the CDC website for specific national information](#).

Local Flu Activity Dashboard *(All data are preliminary and may change as updated reports are received.)*



Reportable Conditions (Cumulative Numbers as of Dec. 21, 2011, 12:00 PM)	2009	2010	2011 YTD
Influenza Associated Hospitalizations (IAH) Reported (based on admission date year) ⁵	523	35	265
Pediatric Influenza Associated Death Reported	2	0	0

¹Interpret with caution. Indicators with small numbers subject to large weekly percentage fluctuations.
² Number of weeks "▲" = Increase (>2%), "▼" = Decrease (>2%), "•" = Stable (-2% to +2%)
³Franklin County, OH residents only (based on zipcode).
⁴Data Source: Google Flu Trends (<http://www.google.org/flutrends>), City = Columbus, OH (Experimental). See website for additional details.
⁵Confirmed cases only unless stated otherwise (Based on jurisdiction equal to Franklin County or City of Columbus and admission date year in ODRS).
⁶Black line is current years data. Based on data availability, red line is historical average (excluding pandemic year), while grey line is last years data only.

CDC 122-Cities Mortality Reporting System: Pneumonia and Influenza (P&I) Mortality

In week 50 of 2011, 6.8% of all Columbus deaths were reported as due to pneumonia or influenza (Figure 1). Nationally, 6.5% of deaths reported were due to pneumonia or influenza in week 49. This national percentage is below the national epidemic threshold of 7.2% for the week.

Influenza Morbidity and Influenza-Like Illness (ILI) Reports

The week 50 percentage of outpatient visits for ILI at sentinel medical practice reporting sites was 0.31% (data from 3 reporters) and is above the local historic baseline for outpatient visits reported by sentinel medical practices. The week 50 percentage of Emergency Department (ED) visits for ILI defined symptoms was stable compared to the previous week, while Pediatric Urgent Care (PUC) visits for ILI symptoms was lower (Figures 2 & 3). In week 50, the ED percentage of visits for ILI defined symptoms was lower than the average seen in past seasons, while the PUC percentage was similar to its weekly baseline.

Nationally, during week 49 of 2011, 1.2% of patient visits reported through the US Outpatient Influenza-like Illness Surveillance Network (ILINet), were due to influenza-like illness (ILI). This percentage is below the national baseline of 2.4%.

Laboratory Surveillance

During week 50 of 2011, reporting Franklin County sentinel medical facility laboratories tested 416 specimens, with 0 (0.0%) positive (Figure 4). The total number of tests done by local reporting labs from week 35 of 2011 through week 50 of 2011 is 5,244; with 22 (0.46%) positives (15 type A, 4 type B, 3 no type provided). Nationally in week 49, WHO and NREVSS laboratories reported 2,480 specimens tested for influenza viruses, 48 (1.9%) of which were positive ([visit the CDC website for more info](#)). The last 3 weeks national breakdown by type and subtype from CDC is shown below:

Week	A Total	A (H1)	A 2009 H1N1	A (H3)	A (unable to sub-type)	A (Subtyping not performed)	B Total	Total # Tested	% Positive
47	33 (82.5%)	0 (0%)	1 (3%)	6 (18.2%)	0 (0%)	26 (78.8%)	7 (17.5%)	2130	1.88
48	36 (97.3%)	0 (0%)	0 (0%)	12 (33.3%)	0 (0%)	24 (66.7%)	1 (2.7%)	2233	1.66
49	40 (83.3%)	0 (0%)	0 (0%)	12 (30%)	0 (0%)	28 (70%)	8 (16.7%)	2480	1.94

ODH lab reported results for those cases that are PCR positive for seasonal influenza. Positive results: (1) influenza A/H3 (total through 12/10/11).

ED and Pediatric Urgent Care Respiratory Visits

In the 50th week of 2011, the percentage of all ED visits categorized as *respiratory* (15.9%) increased slightly compared to the percentage seen the previous week and is similar to the historic baseline for this week. The percentage of reporting PUC visits categorized as *respiratory* (52.7%) decreased slightly compared to the percentage seen in the previous week (Figure 5) and is similar to the baseline average for this week.

Over-the-Counter (OTC) Medication Sales and Antiviral Prescriptions

In week 50 of 2011, over-the-counter medication sale trends were mixed (decreases in thermometer, chest rub, pediatric anti-fever, and throat lozenge; increases in cough and cold, electrolyte, and adult anti-fever) compared to the previous week. In week 49 (latest week available), the percentage of Franklin County pharmacy prescriptions for antivirals, out of all anti-infective prescriptions, increased compared to the previous week and is similar to the historical baseline average (Figure 7). During week 49, the national antiviral prescription percentage was stable compared to the previous week.

Additional Influenza Activity Web Links:

CDC National Seasonal Flu Surveillance Reports: <http://www.cdc.gov/flu/weekly/fluactivity.htm>

CDC International Influenza Activity Map: <http://www.cdc.gov/flu/international/activity.htm>

World Health Organization Situation Updates: http://www.who.int/influenza/surveillance_monitoring/en/

Columbus & Franklin County Influenza Monitoring Summary – Week 50, 2011 (12/11/2011-12/17/2011)

Figure 1: Percentage of Deaths due to Pneumonia and Influenza Columbus, Ohio 2011-12

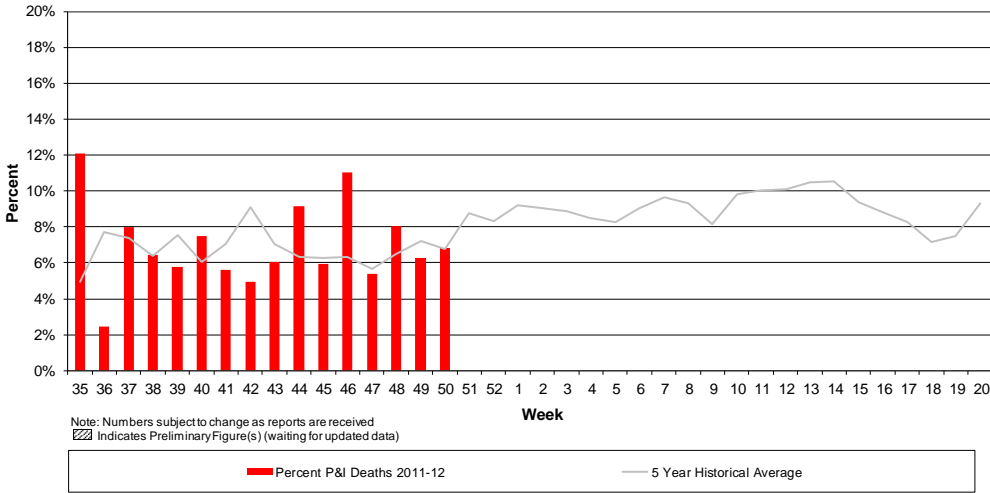


Figure 2: Percentage of Local, National, and HHS Region 5 ILI Outpatient visits and Percentage of Franklin County Resident BioSense Hospital ILI ED Visits, 2011-12

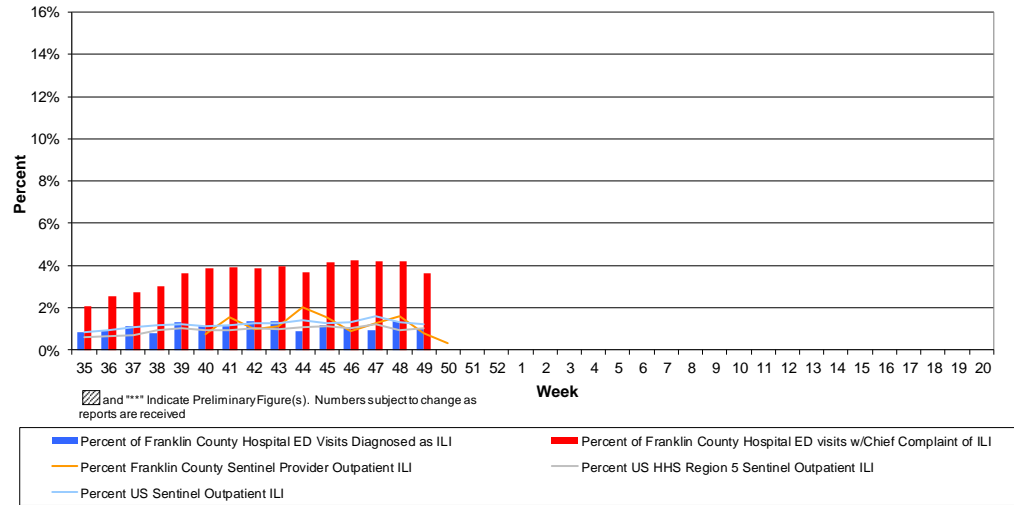


Figure 3: Franklin County Resident ILI Defined* ED and Pediatric Urgent Care Visits, 2011-12, Franklin County, OH

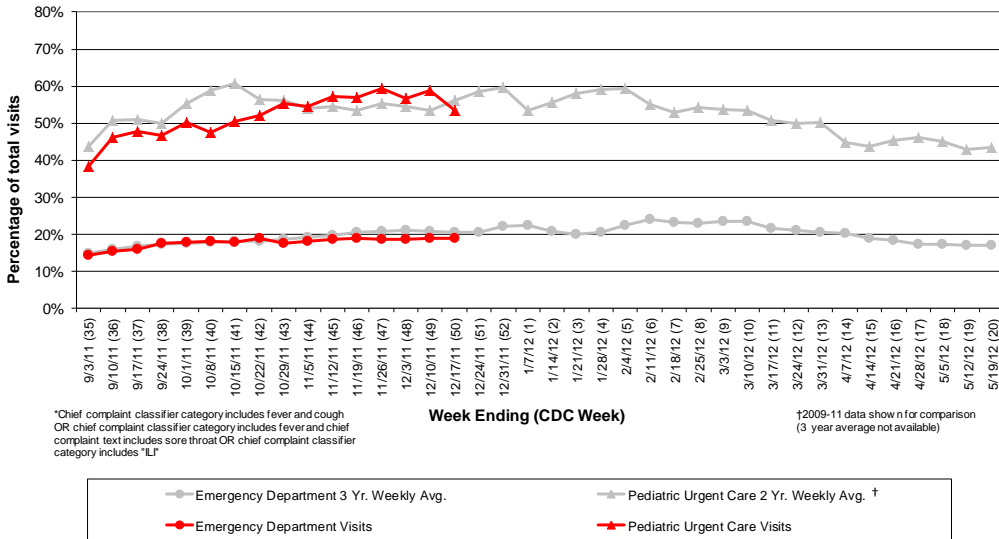
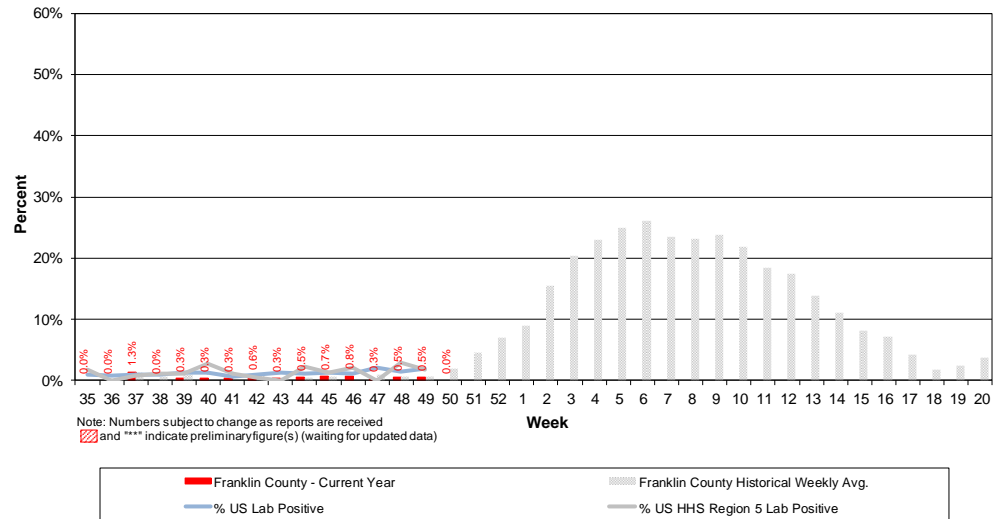


Figure 4: Percentage of Local Reporting and National Laboratory Positive Influenza Tests by Week, 2011-12



Columbus & Franklin County Influenza Monitoring Summary – Week 50, 2011 (12/11/2011-12/17/2011)

Figure 5: Franklin County Resident Respiratory ED and Pediatric Urgent Care Visits, 2011-12, Franklin County, OH

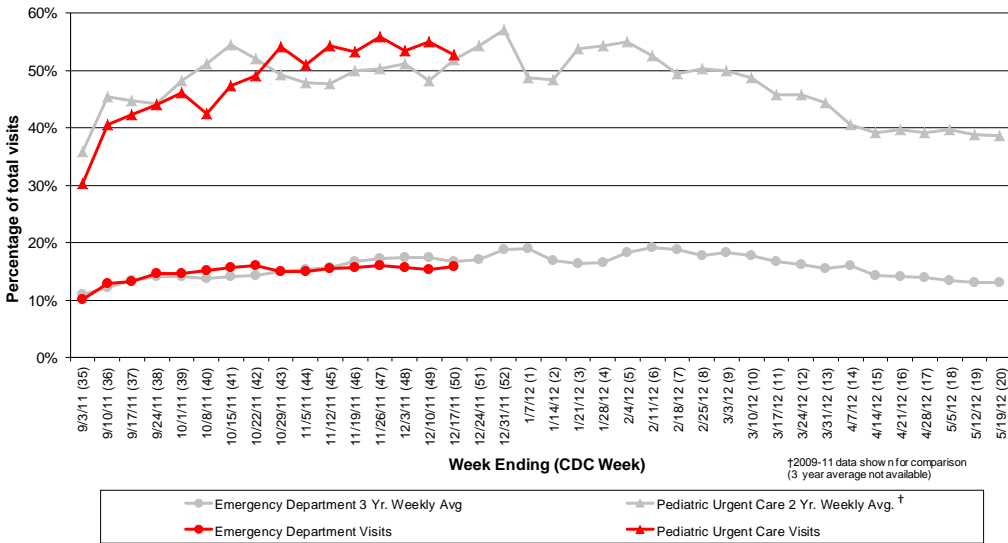


Figure 6: Selected Number of Over-the-Counter Medication Sales, 2011-12, Franklin County, OH

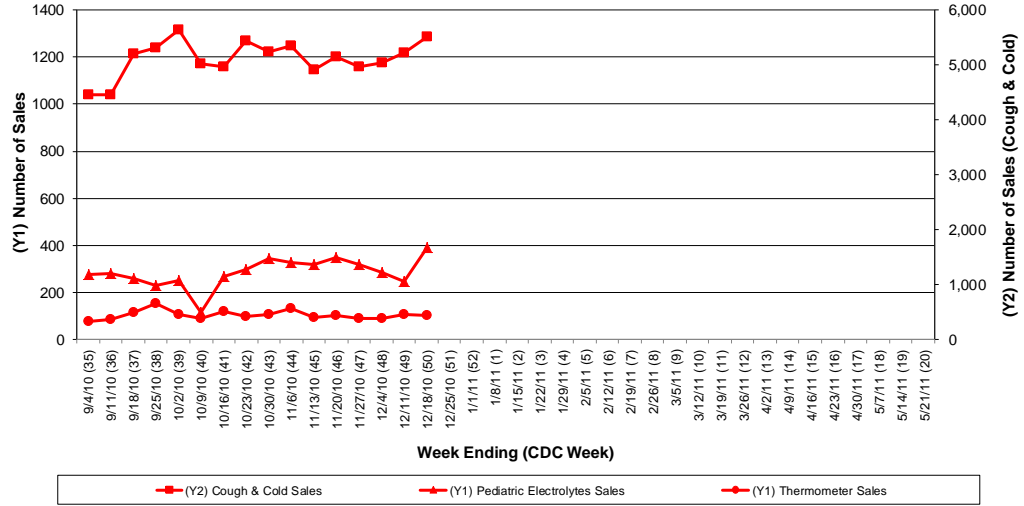


Figure 7: Percentage of Antiviral Prescriptions out of Total Number of Anti-Infective Prescriptions (Selected Pharmacies)

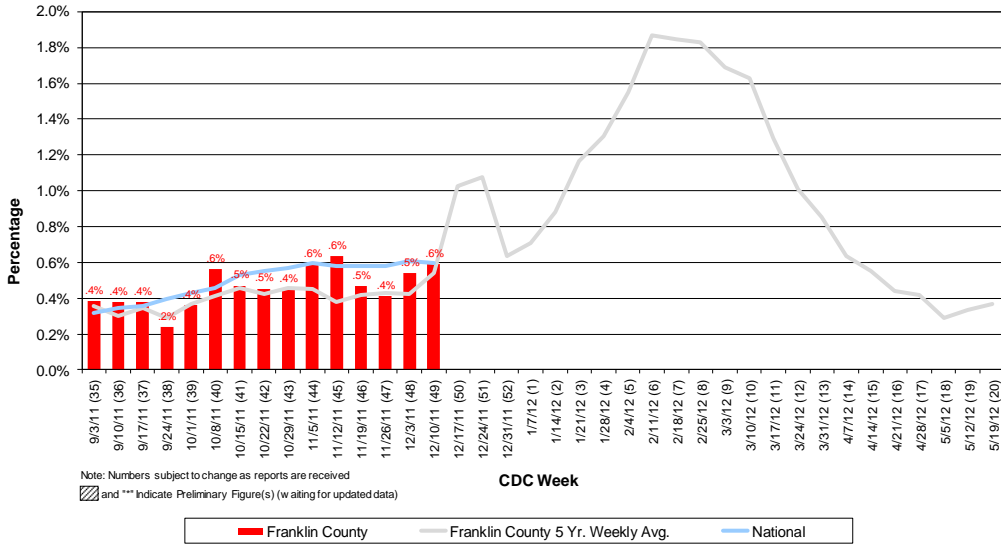


Figure 8: Franklin County Confirmed Influenza Associated Hospitalizations by Hospital Admission Week (As of 12:00 PM, 12/21/2011)

