

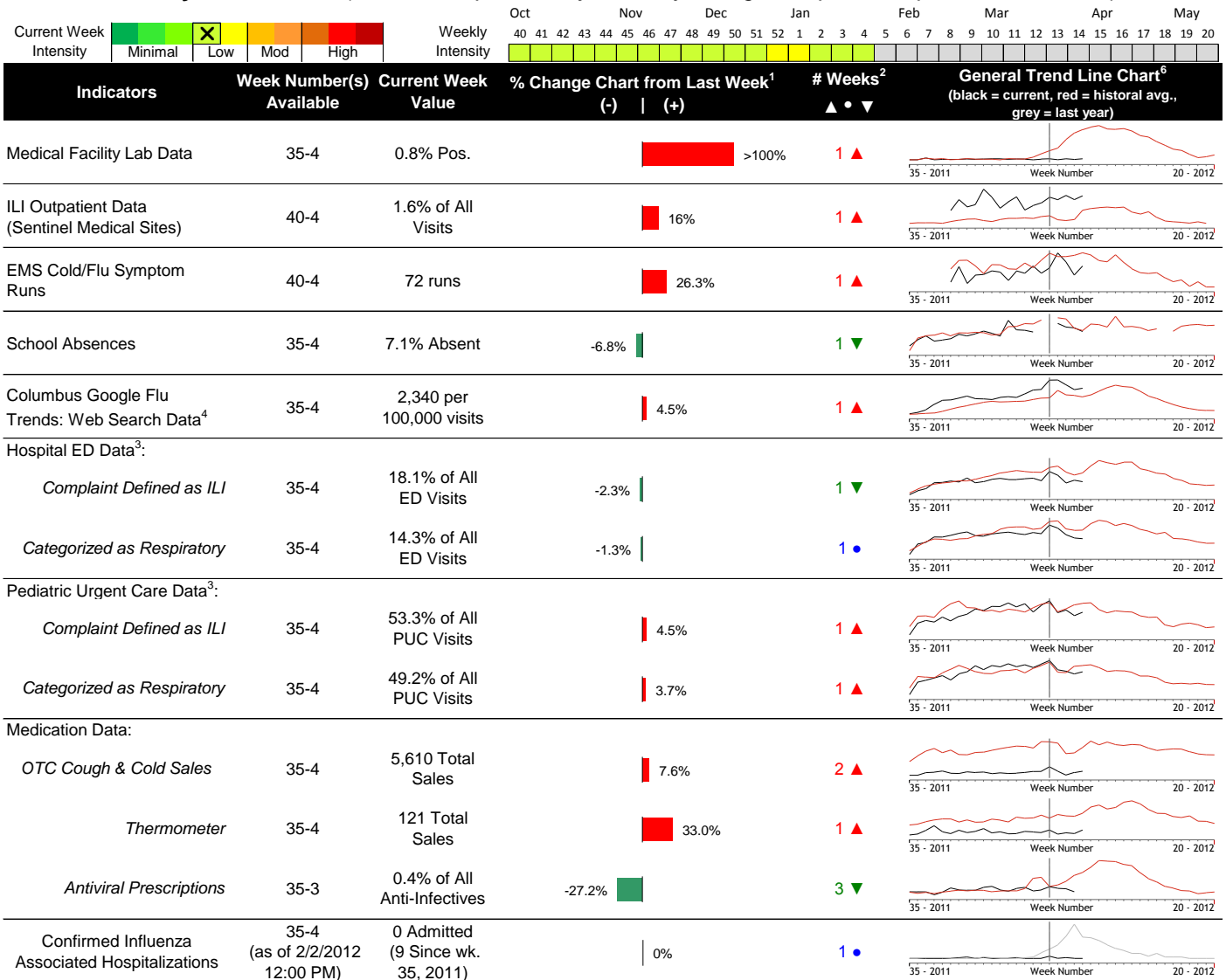
# 2011-2012 Columbus & Franklin County Seasonal Influenza Activity

## Weekly Summary (Week 4, Jan. 22<sup>nd</sup> - Jan. 28<sup>th</sup>, 2012)

### Highlights

- In week 4, influenza activity indicators were mixed, with a majority increasing compared to the previous week. With a few exceptions, most indicators are similar to or below their respective baseline averages.
- Geographic Activity and Local Intensity designation (Experimental: Click [here](#) for draft definitions) = SPORADIC, LOW
- Medical facility labs reported 393 tests run with 3 (0.76%) positive results for week 4 of 2012.
- ED visits for influenza-like-illness (ILI) and respiratory symptoms both decreased slightly compared to the previous week. Pediatric Urgent Care visits for ILI symptoms increased, while respiratory symptoms remained stable compared to the previous week. ED and PUC visits for ILI and respiratory symptoms are currently below their weekly historical baseline averages.
- Most over-the-counter medication sales increased (increases in cough and cold, electrolyte, thermometer, adult anti-fever, and throat lozenge sales; decreases in pediatric anti-fever and chest rub sales) compared to the previous week.
- Nationally during week 3 of 2012, influenza activity remained relatively low. Please [visit the CDC website for specific national information](#) (CDC updates National data on Friday of each week).

### Local Flu Activity Dashboard *(All data are preliminary and may change as updated reports are received.)*



Reportable Conditions (Cumulative Numbers as of Feb. 2, 2012, 12:00 PM)	2009	2010	2011	2012 YTD
Influenza Associated Hospitalizations (IAH) Reported (based on admission date year) <sup>5</sup>	523	35	268	1
Pediatric Influenza Associated Death Reported	2	0	0	0

<sup>1</sup>Interpret with caution. Indicators with small numbers subject to large weekly percentage fluctuations.  
<sup>2</sup>Number of weeks "▲" = Increase (>2%), "▼" = Decrease (>2%), "●" = Stable (-2% to +2%)  
<sup>3</sup>Franklin County, OH residents only (based on zipcode).  
<sup>4</sup>Data Source: Google Flu Trends (<http://www.google.org/flutrends>), City = Columbus, OH (Experimental). See website for additional details.  
<sup>5</sup>Confirmed cases only unless stated otherwise (Based on jurisdiction equal to Franklin County or City of Columbus and admission date year in ODRS).  
<sup>6</sup>Black line is current years data. Based on data availability, red line is historical average (excluding pandemic year), while grey line is last years data only.

### CDC 122-Cities Mortality Reporting System: Pneumonia and Influenza (P&I) Mortality

In week 4 of 2012, 9.6% of all Columbus deaths were reported as due to pneumonia or influenza (Figure 1). Nationally, 7.8% of deaths reported were due to pneumonia or influenza in week 3. This national percentage is above the national epidemic threshold of 7.7% for week 3.

### Influenza Morbidity and Influenza-Like Illness (ILI) Reports

The week 4 percentage of outpatient visits for ILI at sentinel medical practice reporting sites was 1.6% (data from 4 reporters) and is above the local historic baseline for outpatient visits reported by sentinel medical practices. The week 4 percentage of Emergency Department (ED) visits for ILI defined symptoms decreased slightly compared to the previous week, while Pediatric Urgent Care (PUC) visits for ILI defined symptoms increased slightly (Figures 2 & 3). In week 4, the ED and PUC percentage of visits for ILI defined symptoms are lower than the average seen in past seasons.

Nationally, during week 3 of 2012, 1.4% of patient visits reported through the US Outpatient Influenza-like Illness Surveillance Network (ILINet), were due to influenza-like illness (ILI). This percentage is below the national baseline of 2.4%.

### Laboratory Surveillance

During week 4 of 2012, reporting Franklin County sentinel medical facility laboratories tested 393 specimens, with 3 (0.76%) positive (Figure 4). The total number of tests done by local reporting labs from week 35 of 2011 through week 4 of 2012 is 7,723; with 34 (0.44%) positives (25 type A, 6 type B, 3 no type provided). Nationally in week 3 of 2012, WHO and NREVSS laboratories reported 3,572 specimens tested for influenza viruses, 175 (4.9%) of which were positive ([visit the CDC website for more info](#)). The last 3 weeks national breakdown by type and subtype from CDC is shown below:

Week	A Total	A (H1)	A 2009 H1N1	A (H3)	A (unable to sub-type)	A (Subtyping not performed)	B Total	Total # Tested	% Positive
1	148 (90.2%)	0 (0%)	12 (8.1%)	92 (62.2%)	0 (0%)	44 (29.7%)	16 (9.8%)	4808	3.41
2	183 (93.8%)	0 (0%)	24 (13.1%)	117 (63.9%)	0 (0%)	42 (23%)	12 (6.2%)	4533	4.3
3	166 (94.9%)	0 (0%)	20 (12%)	101 (60.8%)	0 (0%)	45 (27.1%)	9 (5.1%)	3572	4.9

ODH lab reported results for Ohio cases that are PCR positive for seasonal influenza. Positive results: (1) influenza A/H3 (total through 1/28/12).

### ED and Pediatric Urgent Care Respiratory Visits

In the 4<sup>th</sup> week of 2012, the percentage of all ED visits categorized as *respiratory* (14.3%) was similar compared to the percentage seen the previous week and is below the historic baseline for this week. The percentage of reporting PUC visits categorized as *respiratory* (49.2%) increased slightly compared to the percentage seen in the previous week (Figure 5) and is lower than the baseline average for this week.

### Over-the-Counter (OTC) Medication Sales and Antiviral Prescriptions

In week 4 of 2012, most over-the-counter medication sales being tracked increased (increases in cough and cold, electrolyte, thermometer, adult anti-fever, and throat lozenge sales; decreases in pediatric anti-fever and chest rub sales) compared to the previous week. In week 3 (latest week available), the percentage of Franklin County pharmacy prescriptions for antivirals, out of all anti-infective prescriptions, decreased compared to the previous week and is lower than the historical baseline average (Figure 7). During week 3, the national antiviral prescription percentage increased slightly compared to the previous week.

### Additional Influenza Activity Web Links:

Ohio Seasonal Flu Surveillance: <http://www.odh.ohio.gov/features/odhfeatures/seasflu/ohfluactivity.aspx>

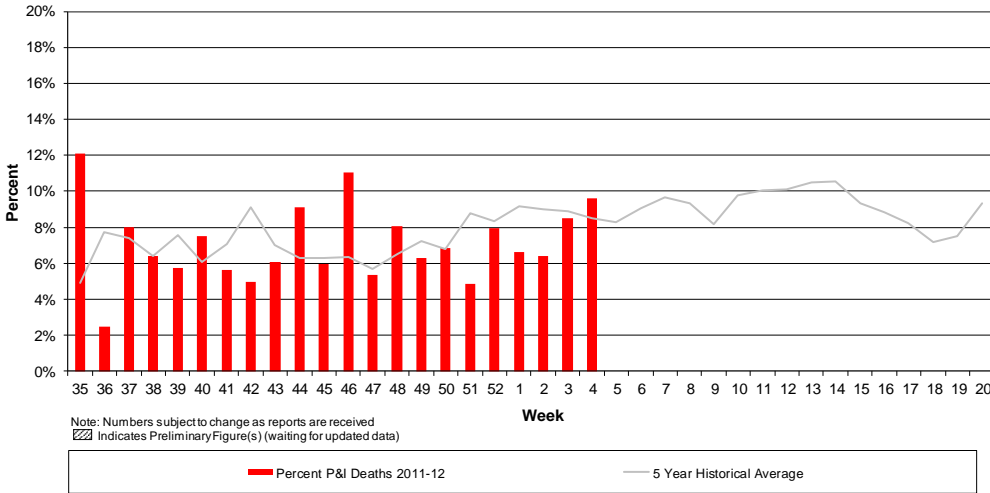
CDC National Seasonal Flu Surveillance Reports: <http://www.cdc.gov/flu/weekly/fluactivity.htm>

CDC International Flu Activity Map: <http://www.cdc.gov/flu/international/activity.htm>

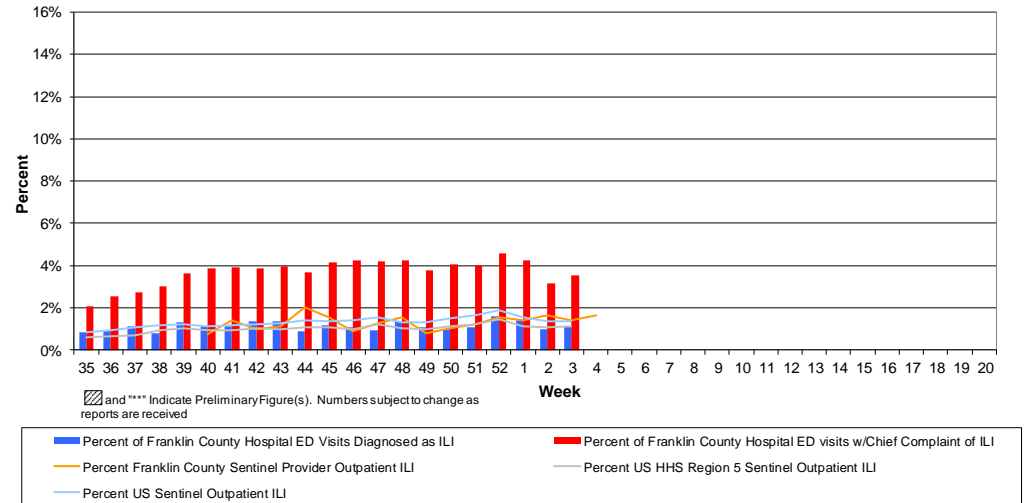
World Health Organization Situation Updates: [http://www.who.int/influenza/surveillance\\_monitoring/en/](http://www.who.int/influenza/surveillance_monitoring/en/)

Columbus & Franklin County Influenza Monitoring Summary – Week 4, 2012 (1/22/2012-1/28/2012)

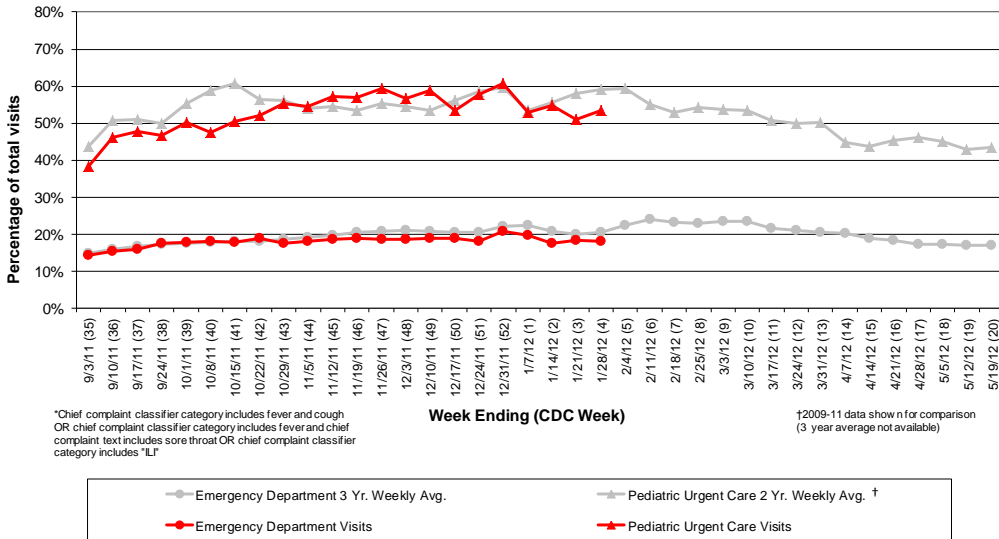
**Figure 1: Percentage of Deaths due to Pneumonia and Influenza Columbus, Ohio 2011-12**



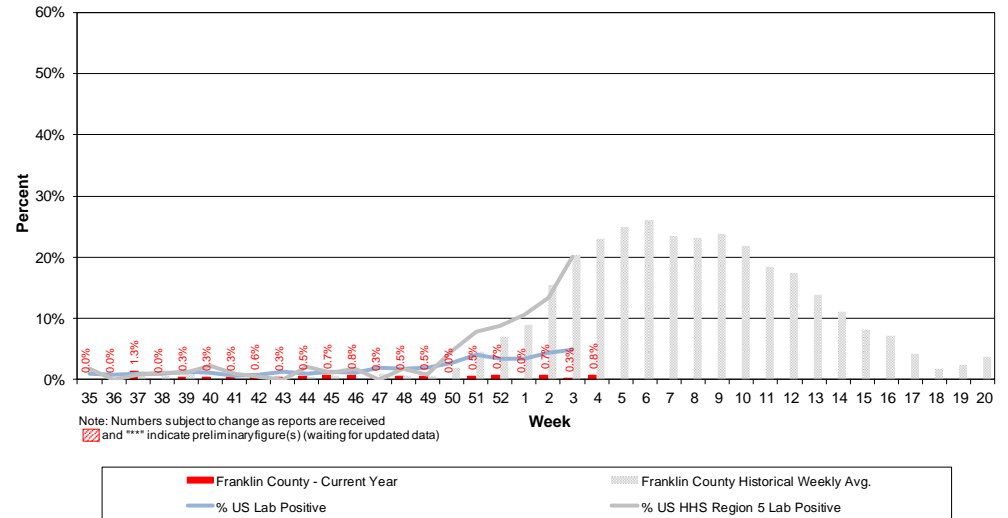
**Figure 2: Percentage of Local, National, and HHS Region 5 ILI Outpatient visits and Percentage of Franklin County Resident BioSense Hospital ILI ED Visits, 2011-12**



**Figure 3: Franklin County Resident ILI Defined\* ED and Pediatric Urgent Care Visits, 2011-12, Franklin County, OH**



**Figure 4: Percentage of Local Reporting and National Laboratory Positive Influenza Tests by Week, 2011-12**



Columbus & Franklin County Influenza Monitoring Summary – Week 4, 2012 (1/22/2012-1/28/2012)

Figure 5: Franklin County Resident Respiratory ED and Pediatric Urgent Care Visits, 2011-12, Franklin County, OH

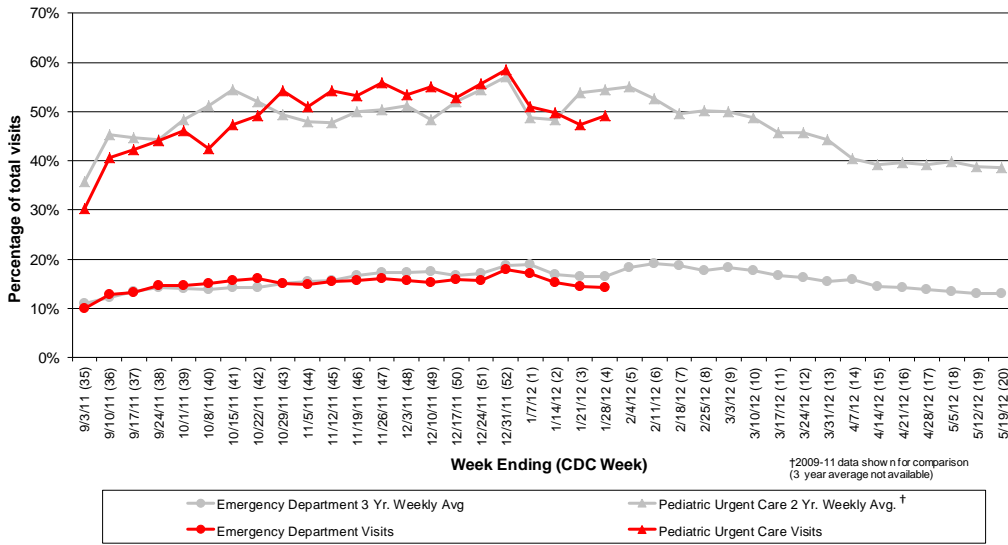


Figure 6: Selected Number of Over-the-Counter Medication Sales, 2011-12, Franklin County, OH

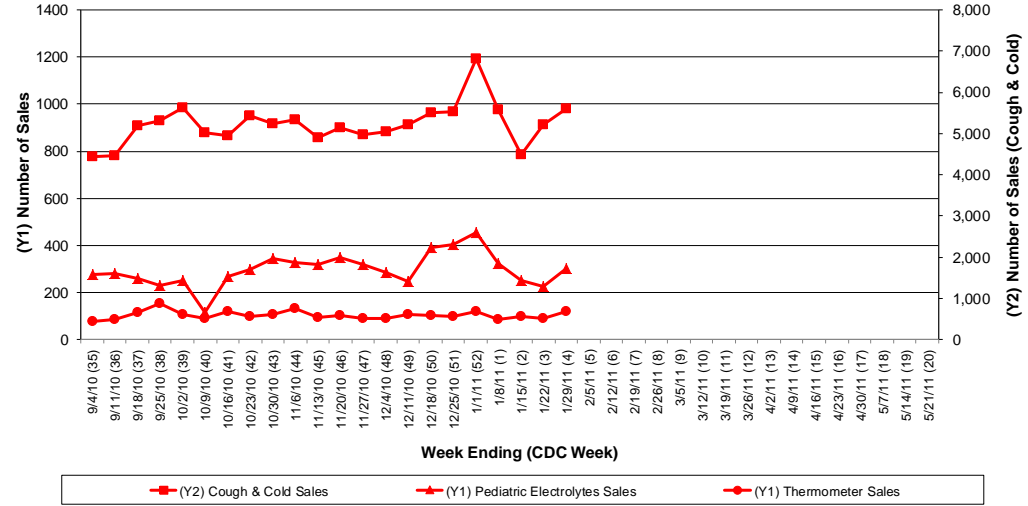


Figure 7: Percentage of Antiviral Prescriptions out of Total Number of Anti-Infective Prescriptions (Selected Pharmacies)

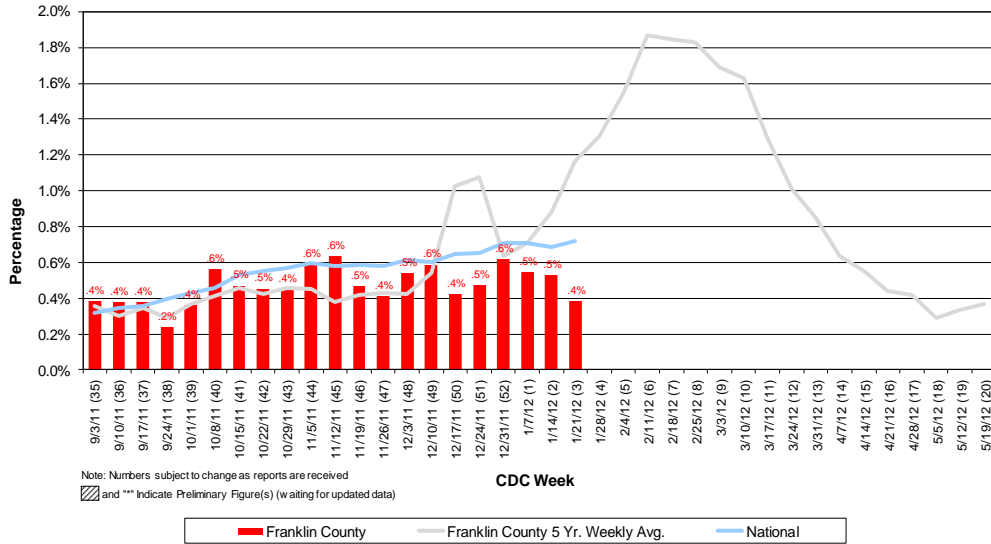


Figure 8: Franklin County Confirmed Influenza Associated Hospitalizations by Hospital Admission Week (As of 12:00 PM, 2/2/2012)

